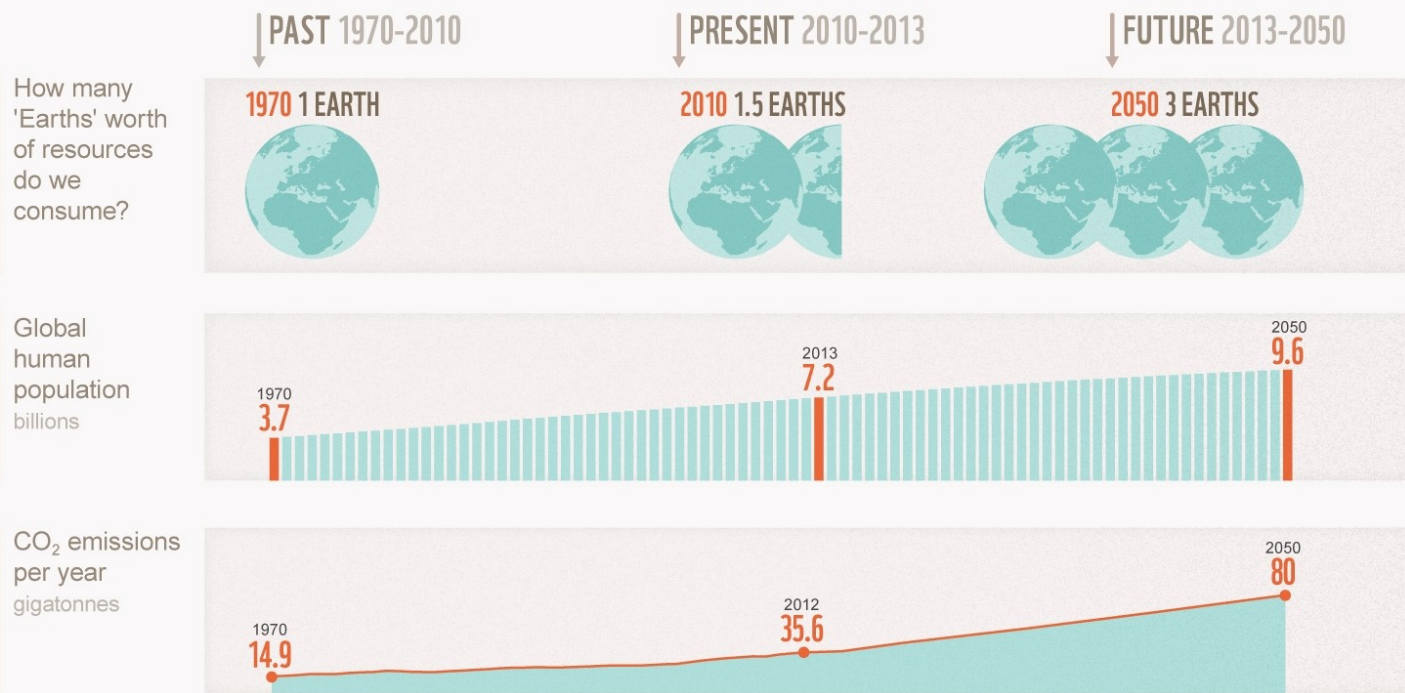


WWF LIVING PLANET REPORT

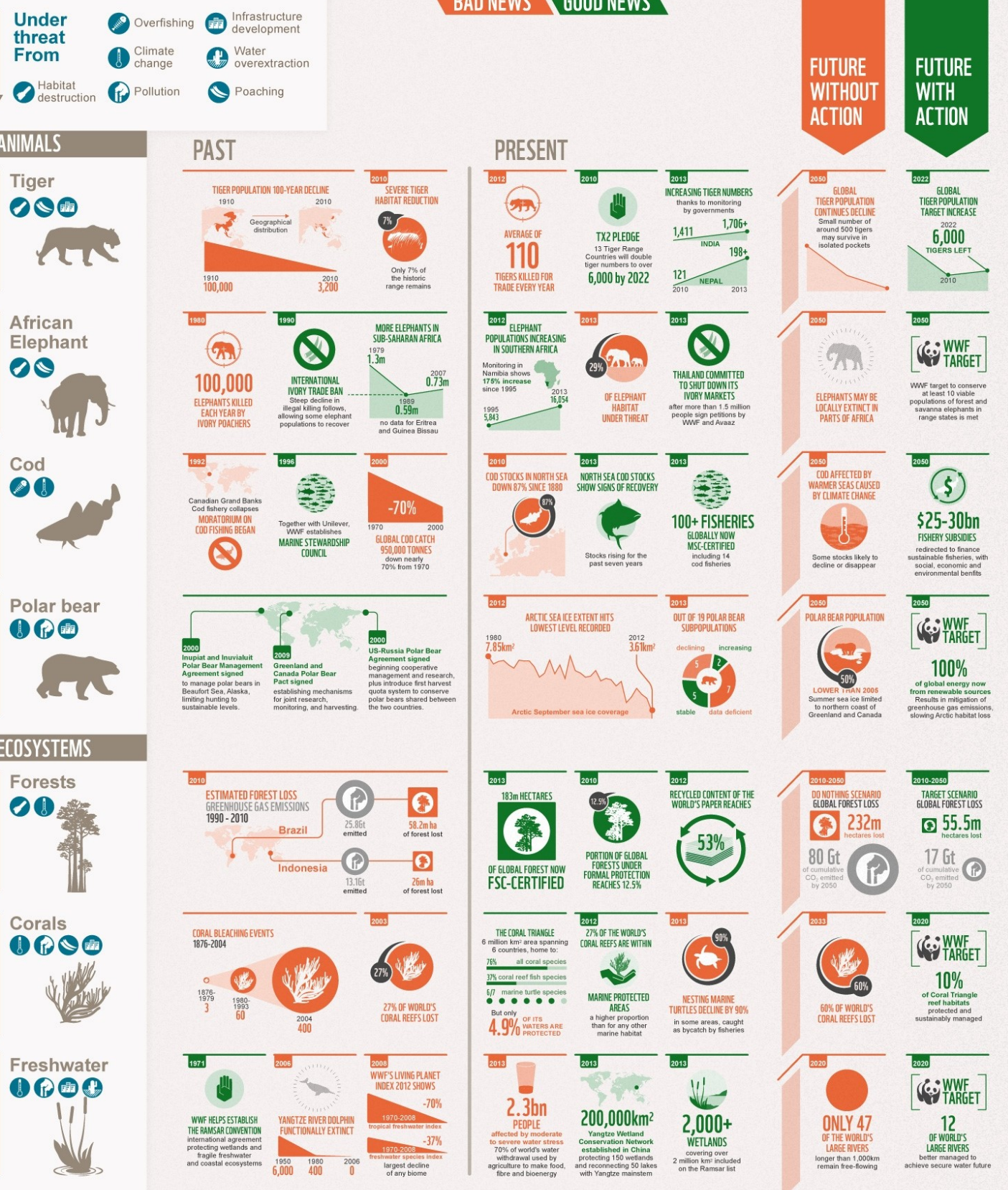
HUMAN IMPACT

Our current consumption levels pose an unsustainable threat to the planet.
How is this affecting biodiversity and endangered species?

OUR ECOLOGICAL FOOTPRINT



IMPACT ON BIODIVERSITY



SOURCES

WWF; Global Footprint Network; UN, World Population Prospects: The 2012 revision (medium fertility scenario); Carbon Dioxide Information Analysis Center, Tyndall Centre; IPCC, Lemieux and Clarke 2009; UNEP / CITES, Elephants in the Dust: The African Elephant Crisis, Frank et al 2005; Mackinson 2002; ICES; MSC; Seafood / SAGB / MSC, Project Inshore, Drinkwater 2005; US Fish and Wildlife Service; IUCN NOAA; FAOSTAT; FSC; Coral Triangle Support Partnership; World Resources Institute; Ramsar Convention on Wetlands

panda.org/lpr